

Binks Century FRP Spray Guns and Systems

Binks have been producing the best FRP equipment for over 50 years and with the addition of the new Century Pump to the Binks "Low Emission Laminator" (LEL) product line provides a complete range of FRP spray guns, spray tips, air nozzles, mixing valves and outfits for the non-atomizing application of resins and gel coats used in open moulding processes.

Binks Offers the Very Best Production Systems

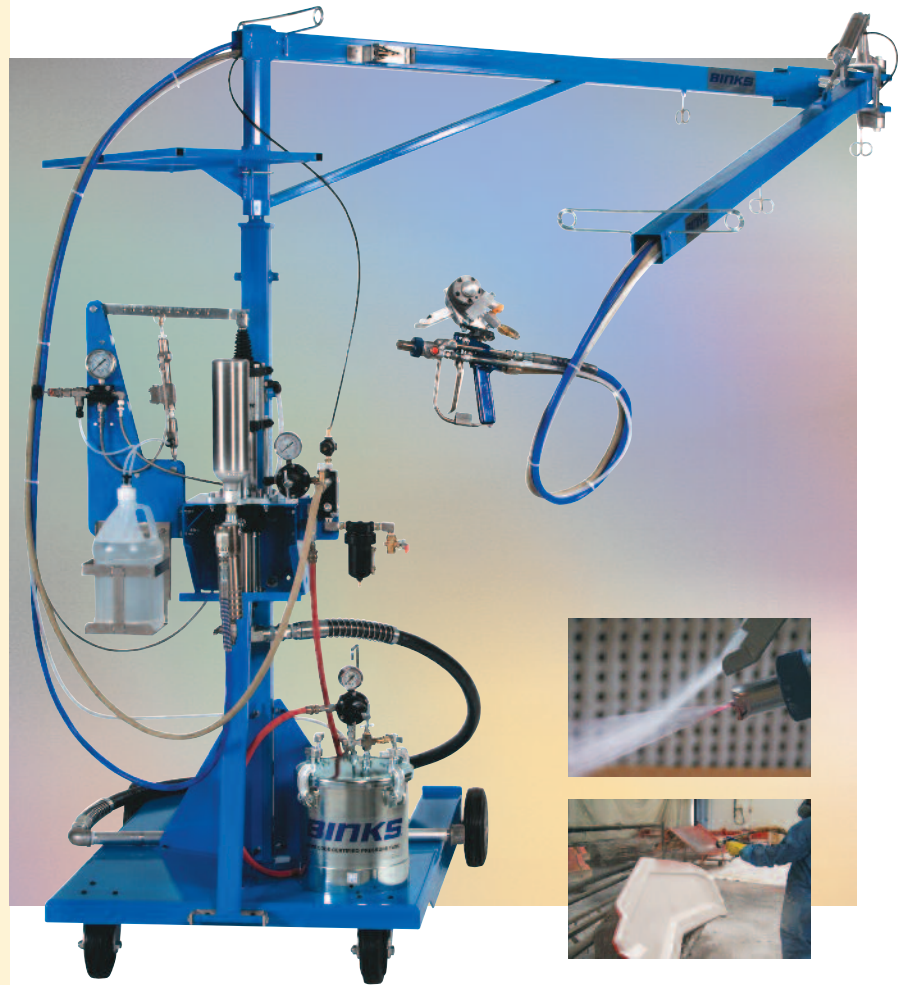
Our total commitment to the composites and protective coating industries provides our customers with many production and environmental advantages. Our full line of Compliant LEL systems, spray guns, and outfits consistently delivers high quality, bottom-line results needed by manufacturing today.

EPA Compliance

Of critical importance to composites manufacturers is the use of EPA Compliant Technologies in their manufacturing operations. One such technology used in Binks Century LEL Spray Guns is Non-Atomizing Resin Application, through extensive testing using the guidelines from the EPA Styrene Emissions Test Protocol, Binks Century LEL guns have proven to emit monomer at or below the levels predicted per EPA guidelines. A complete emissions test report is available from ITW Industrial Finishing upon request.

Typical Applications:

- Marine and Boat Building
- FRP Tank and Pipe products
- General FRP products (structural, decorative, or architectural)
- Transport, including off-road Vehicles, Rail, Truck and Bus
- Cultured Marble
- Bathroom Bath and Shower Trays
- Wind Power



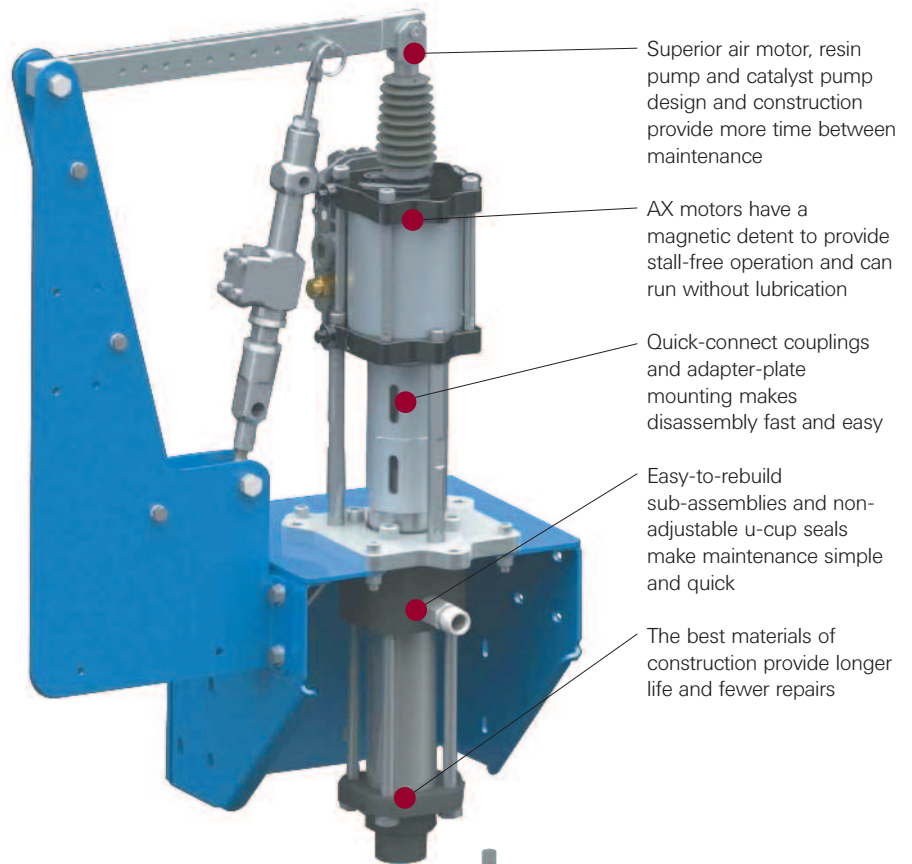
CENTURY™ FRP SYSTEMS

Binks Gel Coat and Resin Laminating equipment

- Fully CE & ATEX approved for all applications
- Binks Spray guns offer internal and external atomisation with a wide tip range
- Outfits use lower air & fluid pressures for superior transfer efficiency, cost savings and reduced operator exposure to fumes and mist
- Systems engineered for a long and reliable working life, made from modular sub assemblies for fast re-builds and easy maintenance
- Catalyst flow meter included for precise and easy mix control
- Reversible carbide seats for longer low cost pump life cycle
- Self adjusting spring loaded pump packings

New Design Optimized for your Application

The Binks Century resin and catalyst pump features several new innovations, designed to provide dependable, long lasting performance under the most demanding production environments.



Superior air motor, resin pump and catalyst pump design and construction provide more time between maintenance

AX motors have a magnetic detent to provide stall-free operation and can run without lubrication

Quick-connect couplings and adapter-plate mounting makes disassembly fast and easy

Easy-to-rebuild sub-assemblies and non-adjustable u-cup seals make maintenance simple and quick

The best materials of construction provide longer life and fewer repairs



17:1 External Mix Gel Coat System

Catalyst Pump

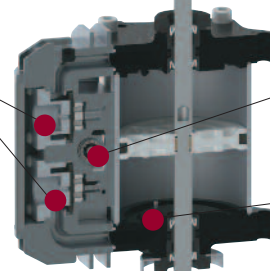
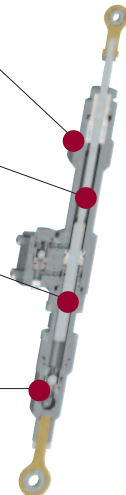
All 316 stainless steel construction for ultimate chemical compatibility and long life

Adjustable PTFE upper packings provide long life without weeping

Stepped displacement rod design means only one wear part – simple and reliable

Simple maintenance with easily accessible packings and seats. No "tiny" parts to handle

Fast exhaust via quick dump valves



Air Motor

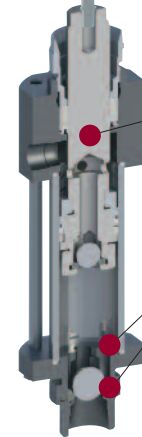
Quick Switchover – low pulse with Patented Magnetic detent spool valve

Minimise pump force losses with poppet valves

Fluid Section

Durable design for heavy duty long working life

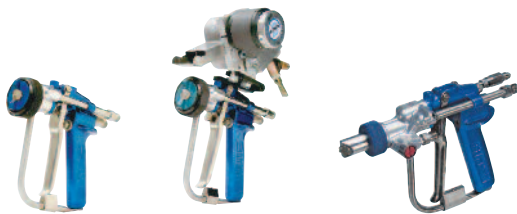
Ball checks optimized for medium to heavy viscosity materials



EPA – Compliant Low Emission Spray Guns

- Uniform, consistent, reliable mix
- Internal or External mix of catalyst and resin available
- One-touch flush for easy cleaning
- Cartridge resin needle and seat assembly
- Resin cartridge needle assembly changes out in less than five minutes

This chart will help you quickly assess which Binks spray gun is suitable for your specific application. First, decide what type of spray gun you need. Then, under the heading that meets these criteria, find the usage description that best matches your application.



Part No.
102-3610

Binks Century LEL External Mix Gel Coat Gun is renowned for its easy operation and low maintenance.

Part No.
102-3655

Binks Century LEL External Mix Chopper gun

Part No.
102-3800-1

*Binks Internal Mix Century LEL Wet Out Gun

	Gel Coat	Wet-Out	Chop	Grani-Coat	Filled Resin	2K Adhesives	External Mix	Internal Mix	Touch-Up	Conventional Spray	HVLP Spray
Ext Mix Res											
Ext Mix Gel											
Int Mix Res											
AAA Air Assisted Airless HVLP											
102-2400		■					■				■
102-2500	■						■				■
102-2545		■			■		■				■
102-2455			■				■				■
LEL Low Emissions Laminator											
102-3600		■					■				
102-3610	■						■				
102-3655			■				■				
102-3650		■			■		■				
102-3665			■		■		■				
102-3800-1		■						■			
102-3800-2		■						■			
102-3825-1			■					■			
102-3825-2			■					■			
102-3835-1			■		■			■			
102-3835-2			■		■			■			
HVLP											
MACH 1PC						■	■				■
MACH 1PCX	■	■				■		■			■
Conventional Spray											
7N 68SS x 302				■				■		■	
7N 68SS x A68PB	■	■					■		■	■	
2100 GW	■						■		■	■	

*Unique catalyst impingement injection system (Patent Pending) for the smooth and accurate application of Fibreglass resins.

FRP Gun Information

Please specify spray tips when ordering Binks FRP spray guns from the relevant gun Service Bulletin.

How to order Binks Century Spray Guns

Application	Spray Gun	Gun Part No.	Century Gun Description	Part Sheet	Seat Material	Feed Tube Connection	Tip Series
Internal Mix Guns for Resins	Wet-Out	102-3800-1	LEL RESIN 1" MIXER	77-2914	Plastic	1/4" NPSM	118
	Wet-Out	102-3800-2	LEL RESIN 2" MIXER	77-2914	Plastic	1/4" NPSM	118
	Chopper	102-3825-1	LEL RESIN 1" MIXER	77-2914	Plastic	1/4" NPSM	118
	Chopper	102-3825-2	LEL RESIN 2" MIXER	77-2914	Plastic	1/4" NPSM	118
	Chopper	102-3835-1	LEL FILLED RESIN 1" MIXER	77-2914	Carbide	3/8" NPSM	118
	Chopper	102-3835-2	LEL FILLED RESIN 2" MIXER	77-2914	Carbide	3/8" NPSM	118
External Mix Guns for Resins	Wet-Out	102-2400	AAA HVLP	77-2520	Plastic	1/4" NPSM	108
	Wet-Out	102-3600	LEL RESIN	77-2772	Plastic	1/4" NPSM	118
	Wet-Out	102-3650	LEL RESIN	77-2772	Carbide	3/8" NPSM	118
	Chopper	102-2455	AAA HVLP	77-2520	Plastic	1/4" NPSM	108
	Chopper	102-3655	LEL Resin	77-2772	Plastic	1/4" NPSM	108
	Chopper	102-3665	LEL Filled Resin	77-2772	Carbide	3/8" NPSM	108
External Mix Guns for Gel-Coat	Gel-Coat	102-2500	AAA HVLP	77-2520	Carbide	1/4" NPSM	108
	Gel-Coat	102-2545	Vinyl Ester AAA HVLP	77-2520	Carbide	3/8" NPSM	108
	Gel-Coat	102-3610	LEL Gel-Coat	77-2772	Carbide	1/4" NPSM	118

AAA = Air Assisted Airless

Standard systems include:

1. 6.5:1 with internal mix
Century chop gun
2. 6.5:1 with external mix
Century wet out resin gun
3. 6.5:1 with external mix
Century chop gun
4. 6.5:1 with internal mix
Century wet out gun
5. 17:1 with external mix
Century gel coat gun

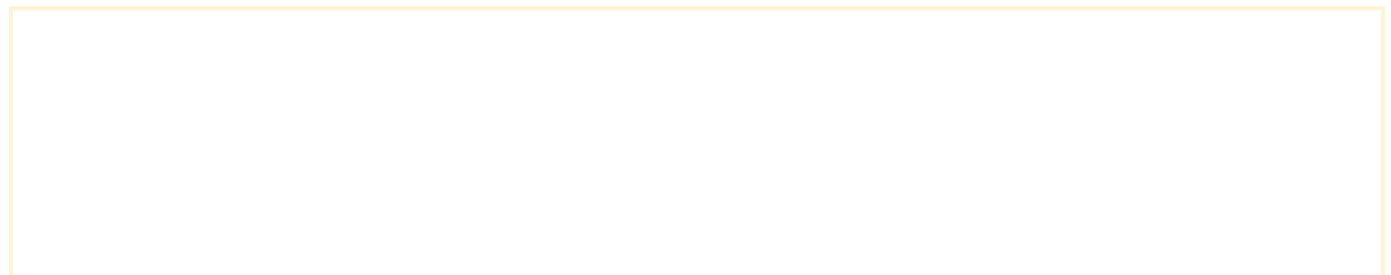
Other configurations are available.

	Pump 17:1 Ratio	Pump 6.5:1 Ratio	102-2500 External Mix Century Gel Coat Gun	102-3610 External Mix Century Gel Coat Gun	102-3600 External Mix Century Wet Out Resin Gun	102-3800-1 Internal Mix Century Wet Out Gun	102-3655 External Mix Century Chop Gun	102-3825-1 Internal Mix Century Chop Gun	Small Cart	Wall-Mounted	Wall-Mounted with Boom	Cart, Mast, & Boom	5 Gallon Siphon Kit (25 litre)	55 Gallon Siphon Kit (210 litres)	Heater Kit (240 volts)	25 Foot Hose Assembly (7.5 metres)
Outfit Part Number																
CX2017HC-B2M2S25	■			■					■				■		■	■
CX2017HC-B2M2T25	■			■					■					■	■	■
CX2017HC-A2M0S25	■		■						■				■			
CX2017HC-A2M0T25	■		■						■					■		
CX2006HC-J2M0T25		■			■				■					■		
CX2006HC-L2M0T25		■				■			■					■		■
CX2006HC-L3M0T25		■				■						■		■		■
CX2006HC-R3M0T25		■					■				■			■		■
CX2006HC-U3M0T25		■						■			■			■		■
CX2017HC-L2M0T25	■					■			■					■		■
CX2017HC-J2M0T25	■						■		■					■		■

Specifications

	CX2006HC	CX2017HC
Pressure Ratio	6.5:1	17:1
Flow Rate at 60 cycles per minute	7.6 l/min	
Supports	1 Century Spray Gun – .062" LEL tip or .036" AAA tip	
Displacement per cycle	127 cm ³	
Inlet Fluid Connection	1" NPT (f) or 1 1/4" NPT (m)	
Outlet Fluid Connection	1/2" NPT (f)	
Air Connection	3/8" NPT (f)	
Wetted Materials Resin Pump	Anodised Aluminum, Plated Carbon Steel, Stainless Steel, Hard Chrome, Nylon, PTFE, UHMWPE, Tungsten Carbide	
Wetted Materials Catalyst Pump	Stainless Steel, Silicone Rubber, PTFE, UHMWPE	
Max Fluid Pressure with included air motor	750 psi (52 bar)	1970 psi (136 bar)
Max Air Inlet Pressure	116 psi (8 bar)	
Max Recommended Cycle Rate	Up to 40 Cycles/minute—not continuous	
Noise Level	96 dB(A)	97 dB(A)

For further technical information please refer to the product service bulletin



ITW Industrial Finishing
 Ringwood Road, Bournemouth, Dorset
 England BH11 9LH
 Tel: +44 (0)1202 571111
 Fax: +44 (0) 1202 573488
 Email: marketing-uk@itwifeuro.com

ITW Oberflächentechnik GmbH
 Justus-von-Liebig-Strasse 31,
 63128 Dietzenbach Germany
 Tel: +49 (0) 6074-403-233
 Fax: +49 (0) 6074-403-281
 Email: marketing-de@itwifeuro.com

ITW Surfaces et Finitions
 163-171 Avenue des Auréats, BP 1453
 26014 Valence cedex FRANCE
 Tel: +33(0)4 75 75 27 00
 Fax: +33(0)4 75 75 27 59
 Email: marketing-fr@itwifeuro.com